



DATA SHEET

Hall Effect Current Sensor

PN: CHB_LTA15D50/100

IPN=50~300A

Feature

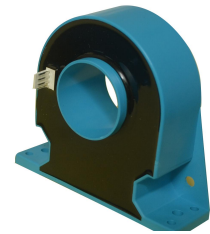
- Closed- loop (compensated) current transducer
- Capable measurement of currents: DC, AC, pulse with galvanic isolation between primary circuit and secondary circuit.
- Supply voltage: DC $\pm 12\sim 18V$

Advantages

- High accuracy
- Easy installation
- Low temperature drift
- Optimized response time
- High immunity to external interference
- Very good linearity
- Can be customized

Applications

- The application of variable frequency electrical appliances
- AC/DC variable-speed drive
- Uninterruptible Power Supplies (UPS)
- Switched Mode Power Supplies (SMPS)
- Inverter applications



RoHS

Electrical data: (Ta=25°C, Vc= ±15VDC)

Parameter \ Ref	CHB50 LTA15D50	CHB100 LTA15D100	CHB200 LTA15D100	CHB300 LTA15D100
Rated input Ipn(A)	50	100	200	300
Measuring range Ip(A)	0 ~ ±150	0 ~ ±300	0 ~ ±600	0 ~ ±900
Turns ratio Np/NS (T)	1:1000	1:1000	1:2000	1:3000
Output current rms IS(mA)	±50*IP/IPN	±100*IP/IPN	±100*IP/IPN	±100*IP/IPN
Secondary coil resistance RS (Ω)	15	15	22	38
Inside resistance RM (Ω)	[(VC-0.6V)/(IS*0.001)]-RS			
Supply voltage VC(V)	(±12 ~ ±18) ±5%			
Accuracy XG(%)	@IPN,T=25°C		< ±0.5	
Offset current IOE(mA)	@IP=0,T=25°C		< ±0.2	
Temperature variation of IOE IOT(mA/°C)	@IP=0,-40 ~ +85°C		< ±0.005	
Linearity error εr(%FS)			< 0.1	
Di/dt accurately followed (A/μs)			> 100	
Response time tra(μs)	@90% of IPN		< 1.0	
Power consumption IC(mA)			15+Is	



Cheemi Technology Co., Ltd

Tel: 025-85996365

E-mail: info@cheemi-tech.com

www.cheemi-tech.com

Add: N22, Xianlongwan, Xianyin South Road, Qixia District, Nanjing - China.

Cheemi Technology Co., Ltd

Bandwidth BW(KHZ)	@-3dB,IPN	DC-200
Insulation voltage Vd(KV)	@50/60Hz, 1min,AC	6.0

General data:

Parameter	Value
Operating temperature TA(°C)	-40 ~ +85
Storage temperature TS(°C)	-55 ~ +125
Mass M(g)	70
Plastic material	PBT G30/G15, UL94- V0;
Standards	IEC60950-1:2001
	EN50178:1998
	SJ20790-2000

Dimensions(mm):

CHB-LTA15D50/100M	CHB-LTA15D50/100S	Connection
		<p>General tolerance</p> <p>General tolerance: <math>\pm 0.5\text{mm}</math> Primary through-hole : $D 20 \pm 0.15$ Connection of Secondary : M:2510-04A (instead of MOLEX5045-04A) S :DG301-5.0-03P</p>

Remarks:

- When the current goes through the primary pin of a sensor, the voltage will be measured at the output end.
- Custom design is available for the different rated input current and the output voltage.
- The dynamic performance is the best when the primary hole is fully filled with.
- The primary conductor should be $< 100^{\circ}\text{C}$.

WARNING : Incorrect wiring may cause damage to the sensor.



Cheemi Technology Co., Ltd
 Tel: 025-85996365 E-mail: info@cheemi-tech.com www.cheemi-tech.com
 Add: N22, Xianlongwan, Xianyin South Road, Qixia District, Nanjing - China.