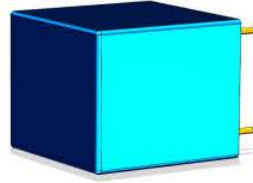


### Features



- Using high magnetic permeability ultra-microcrystalline iron core
- Working temperature range: -40°C to +75°C
- Pure copper enameled wire has high winding precision and good linearity
- Epoxy resin potting with high pressure resistance level
- Small size, strong anti-interference ability
- Altitude does not exceed 1000m
- Relative humidity:  $\leq 95\%$
- All plastic shell, flame retardant conforms to UL94V-0
- Conform to JB/T 10667-2006, JJG 314-2010

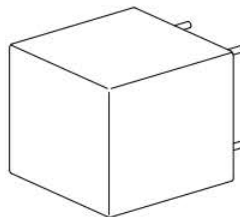
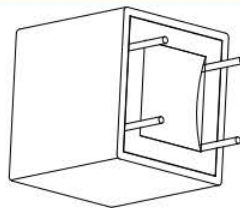
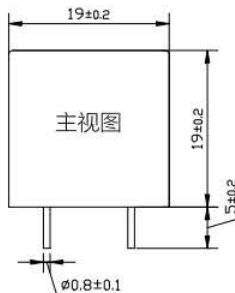
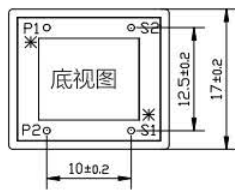


This product uses a current type Voltage transformer. The primary side is connected with a current limiting resistor in series in the circuit to convert the high voltage into milliampere current, which is converted into milliampere current on the secondary side through the internal magnetic core. The resistance is connected in parallel for sampling or through the circuit amplifier; This product is widely used in multifunctional electronic energy meters, anti-theft meters, digital display meters, etc. It can also be used in digital instruments and meters such as power transmitters, telemetry and remote control data acquisition systems, relay protection, etc.

### Electrical performance parameter $T_a=25^\circ\text{C}$

Project	Symbol	2mA/2mA	Unit
Rated input current	IPN	2	mA
Measuring current range	IP	0.1~2.4	mA
Turn ratio ( $N_p/N_s$ )	KN	1000:1000	T
Secondary load	Rf	$\leq 100$	$\Omega$
Ratio difference component	XPN	IPN $\rightarrow 5\sim 120\% @ \pm 0.1$ when $R_f=20\Omega$	%
Angle difference component	$\delta$ PN	IPN $\rightarrow 5\sim 120\% @ \pm 15$ when $R_f=20\Omega$	'
Power frequency withstand voltage	VD	50Hz@rms /1min / > 4000	V
working frequency	f	45~1250	Hz
Insulation resistance	VDR	DC1000V /1min / > 500	M $\Omega$

### Dimensions drawing unit (mm)



### Wiring Instructions

- P1 → The primary pin is input into the positive pole
- P2 → Primary pin input negative terminal
- S1 → Secondary pin output terminal positive
- S2 → Negative pole of secondary pin output terminal
- \* → Dotted terminal

### Mechanical parameters

- Shell material: blue flame retardant ABS
- Medium filling: epoxy resin
- I/O mode: 0.8mm gold-plated pin pcb
- installation: L\*W\*H: 19\*19\*17
- Weight: < 20g